

On behalf of the Kaulunani Policy Committee (KPC), I'd like to thank you again for your interest and willingness to reach out to the Aloha Arborist Association (AAA) members to assist in reviewing and providing comments on current State/County rules, regulations, codes, resources, etc. related to trees and landscaping.

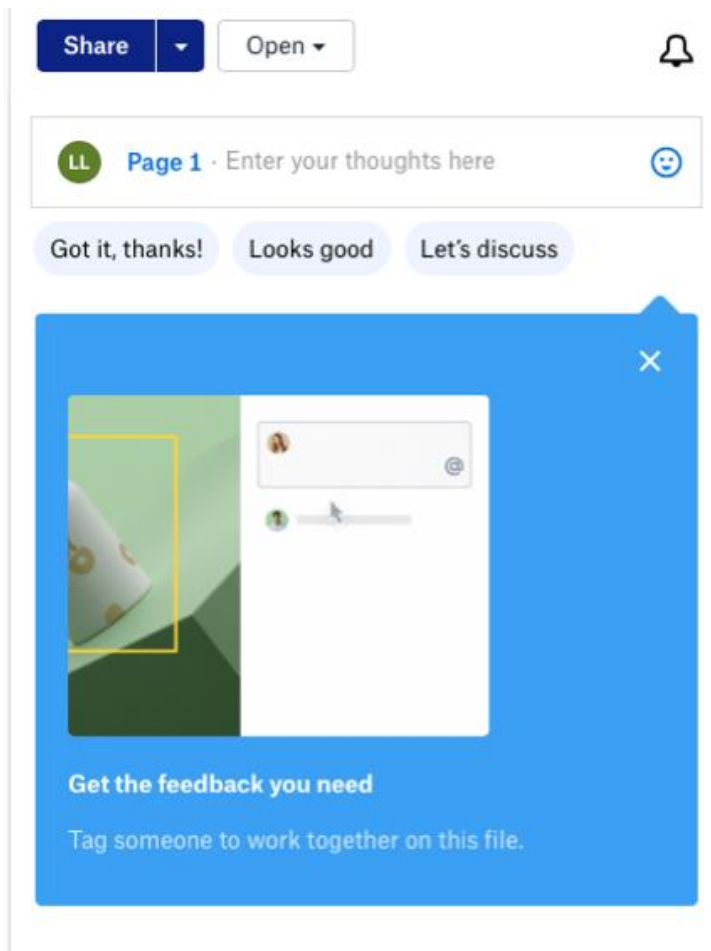
The DropBox link below will take you to the files. There should be a folder for "Hawaii", "Honolulu", "Kauai" and "Maui" and an additional folder for "State", with pertinent documents in each folder.

[https://www.dropbox.com/sh/ha350ltoyhul6wf/AABFxFn\\_S7eK4ZppGHR3Zce8a?dl=0](https://www.dropbox.com/sh/ha350ltoyhul6wf/AABFxFn_S7eK4ZppGHR3Zce8a?dl=0)

Kaulunani is currently working with the Hawaii Chapter of the American Society of Landscape Architects (ASLA) to provide a similar review of these documents. My hope is to try to get through the review of these documents by late July/early August. AAA's review of the documents, providing notes where you see gaps, overlaps, conflicts, etc. will be enlightening and greatly welcomed!

**Comments//mark-ups should be made directly in DropBox for each document**

**using the comments sidebar, see image below.**



- General comments can be entered directly in the text box.
- Comments related to a specific sentence or paragraph within a document can be made by first clicking the comments icon (located at the far right, second icon from the top). After highlighting the pertinent text a similar comments icon will appear next to the highlighted text. Click on this icon and then enter comments into the text box, as per usual. This will be a huge help when it comes to compiling the comments.