

COUNTY OF LOS ANGELES  
DEPARTMENT OF AGRICULTURAL COMMISSIONER/WEIGHTS AND MEASURES

## Ficus Whitefly (*Singhiella simplex*)

**Other common names:** Fig whitefly.

**Distribution:** Native to southeastern Asia (Myanmar, China and India). Introduced into the U.S.: Florida (2007) and California (2012).

**Hosts and damage:** Attacks various *Ficus* species (*F. aurea*, *F. altissima*, *F. bengalensis*, *F. benjamina*, *F. lyrata*, *F. microcarpa*, and *F. maclellandii*). Was also observed on *Rhododendron (Azalea) indica*. Feeding may cause yellowing of leaves, defoliation and branch dieback. High populations are able to stunt the growth of young trees.

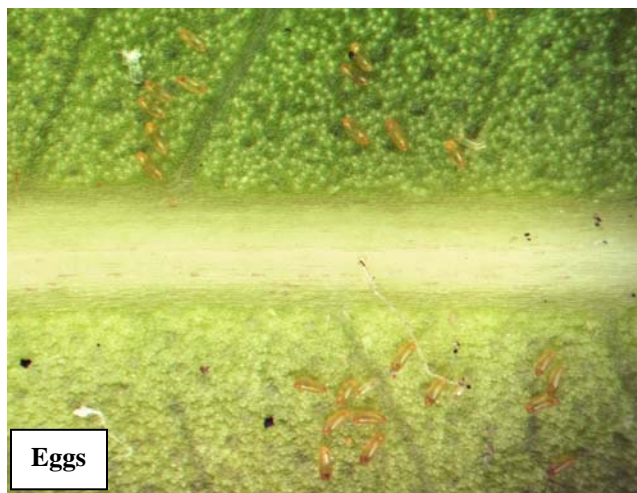
**Field ID: Adults** (about 1.4-1.6 mm) have white wings with faint grayish-brown markings. Eyes dark red. Fly readily when disturbed.

**Nymphs** have light green to tan, often semitransparent, oval bodies which may blend with the surrounding leaf surface. Pupae with red eyes. Immature stages can be found on both lower and upper surfaces of leaves.

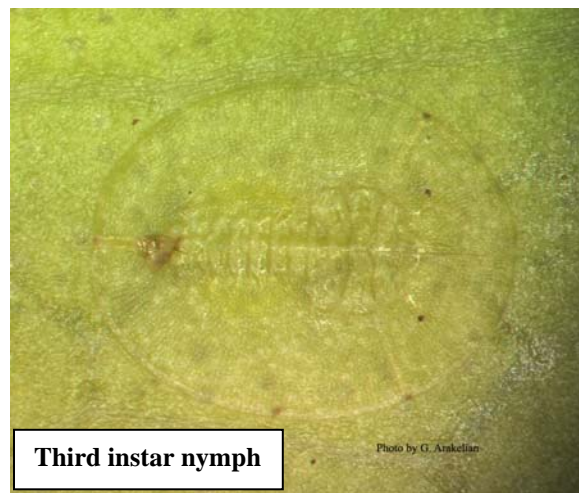
**Eggs:** Yellow to light brown color, elongate. Deposited mostly along the midvein on the underside of the leaves.







**Eggs**



**Third instar nymph**

Photo by G. Arakelian



**Healthy (left) and parasitized (right) puparia**

Photo by G. Arakelian



**Infested Ficus tree**



**Adult and immature whiteflies on affected leaves**