

"lobate lac scale"  
*Paratachardina pseudolobata*  
(Hemiptera: Kerriidae)

Native home: unknown, but thought to be Asia or the Pacific Ocean region.

First collected in Hawaii: October 11, 2012

Hawaii distribution: Oahu only (Moanalua)

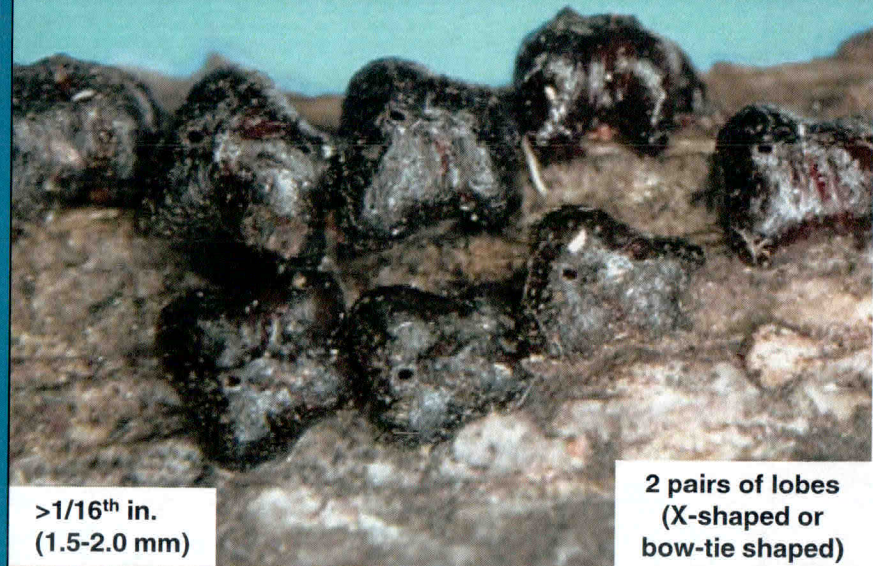
Recorded hosts in Hawaii: weeping banyan (*Ficus benjamina*), red hibiscus, mango.

U.S. distribution: Florida (1999)

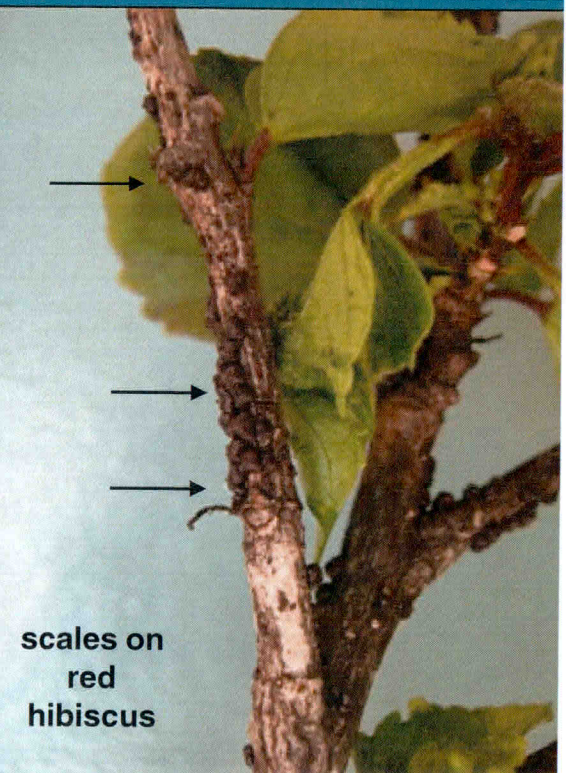
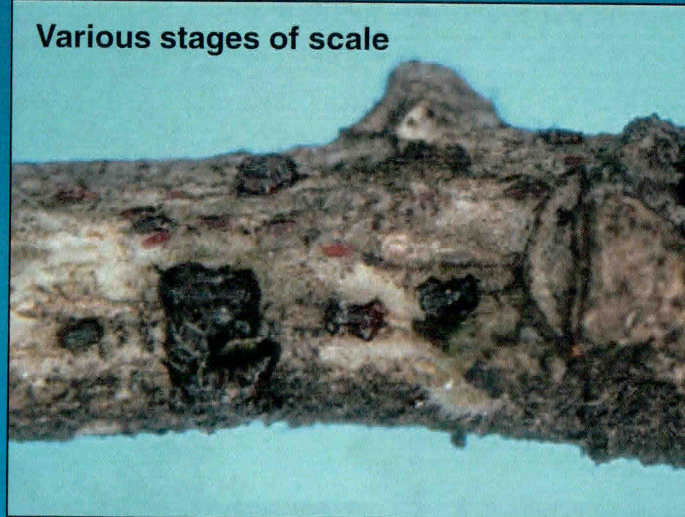
Recorded hosts in Florida: >300 plant species

World distribution: Bahamas, Christmas Island, and Cuba.

Adult female scales



Various stages of scale







Red hibiscus

#### Four life stages

1. egg
  2. first instar (crawler)
  3. second instar
  4. third instar (adult)
- total life cycle: 3-4 months

Parthenogenetic (no males)  
and ovoviviparous (eggs  
retained under the scale  
covering and the live young  
exit.